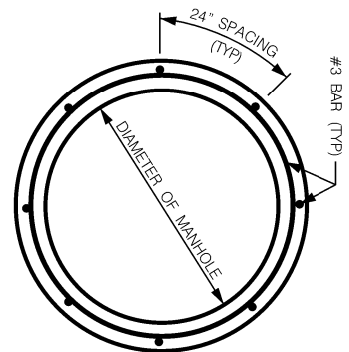
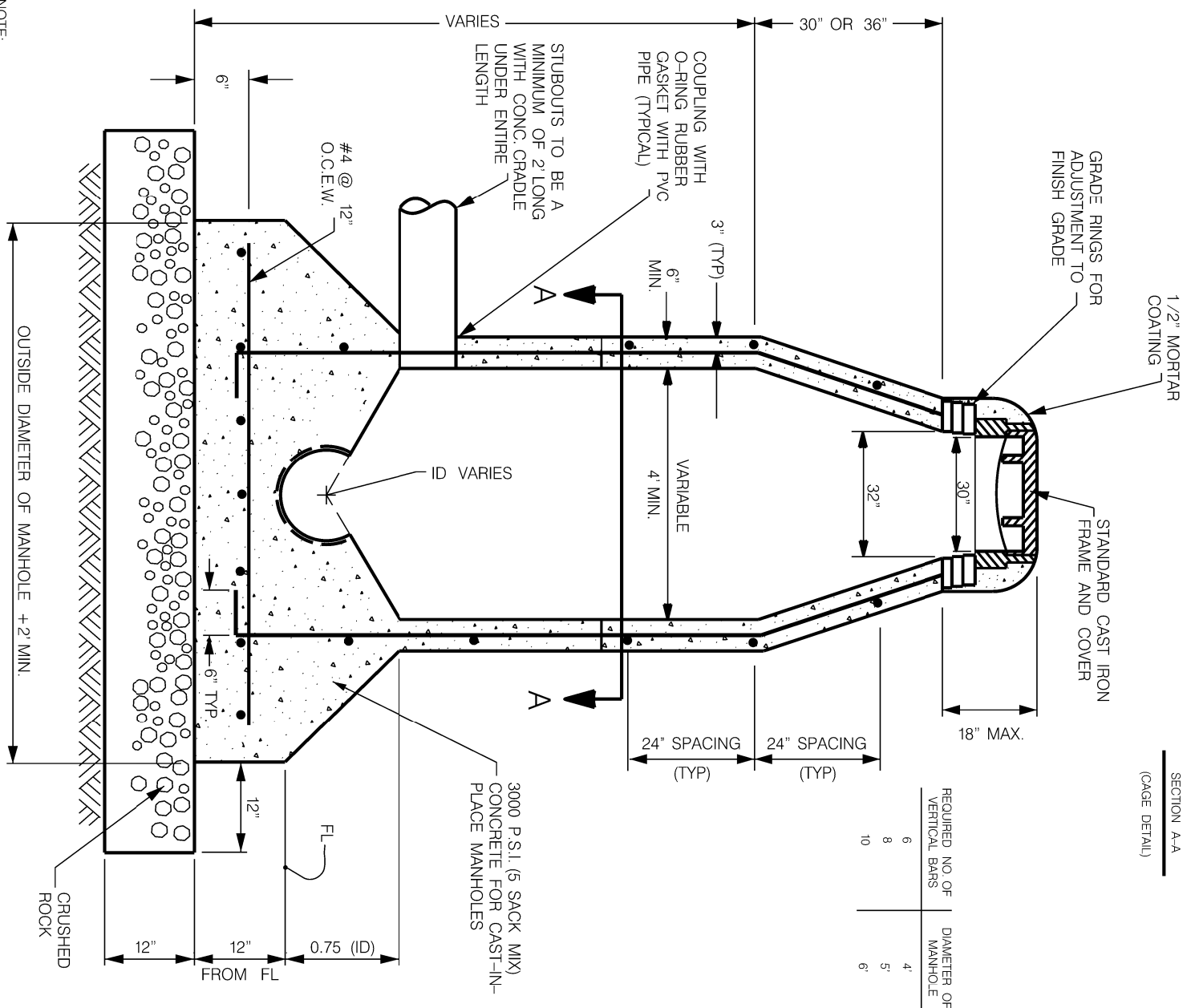


**\* MANHOLE NOTES**

- MANHOLE NOTES:
1. ALL SANITARY SEWER MANHOLES FOR SEWERS LARGER THAN 36" SHALL BE CAST-IN-PLACE CONCRETE WITH REINFORCING STEEL. THE FLOORING CONCRETE SHALL BE SFA-100 AND SHALL BE 405-100% SOLIDS SOLVENT FREE ULTRA HIGH-BUILD EPOXY SYSTEM FROM RAVEN LINING SYSTEMS WITH A MINIMUM THICKNESS OF 125 MILS.
  2. ALL MANHOLES SHALL BE PRECAST NO CAST-IN-PLACE MANHOLES WILL BE ACCEPTED.



SECTION A-A  
(CAGE DETAIL)



REQUIRED NO. OF VERTICAL BARS	DIAMETER OF MANHOLE
6	4'
8	5'
10	6'

NOTE:  
DETAIL SUBJECT TO CHANGE PER DIRECTION OF CITY OF LEWISVILLE ENGINEERING DIVISION.



**Standard Details**  
**Cast In Place Manholes**  
**Concentric**

Revisions:

No.	Description	Date

**Engineering Department**  
Office No. 972-219-3490  
www.cityoflewisville.com

Dated: 4-27-10  
Dated: 09-05-2019  
Sheet: **7.3**

NOTE:  
MANHOLES WITH LINES ENTERING OR EXITING 12" OR LARGER REQUIRE 125 MIL RAVIN LINES