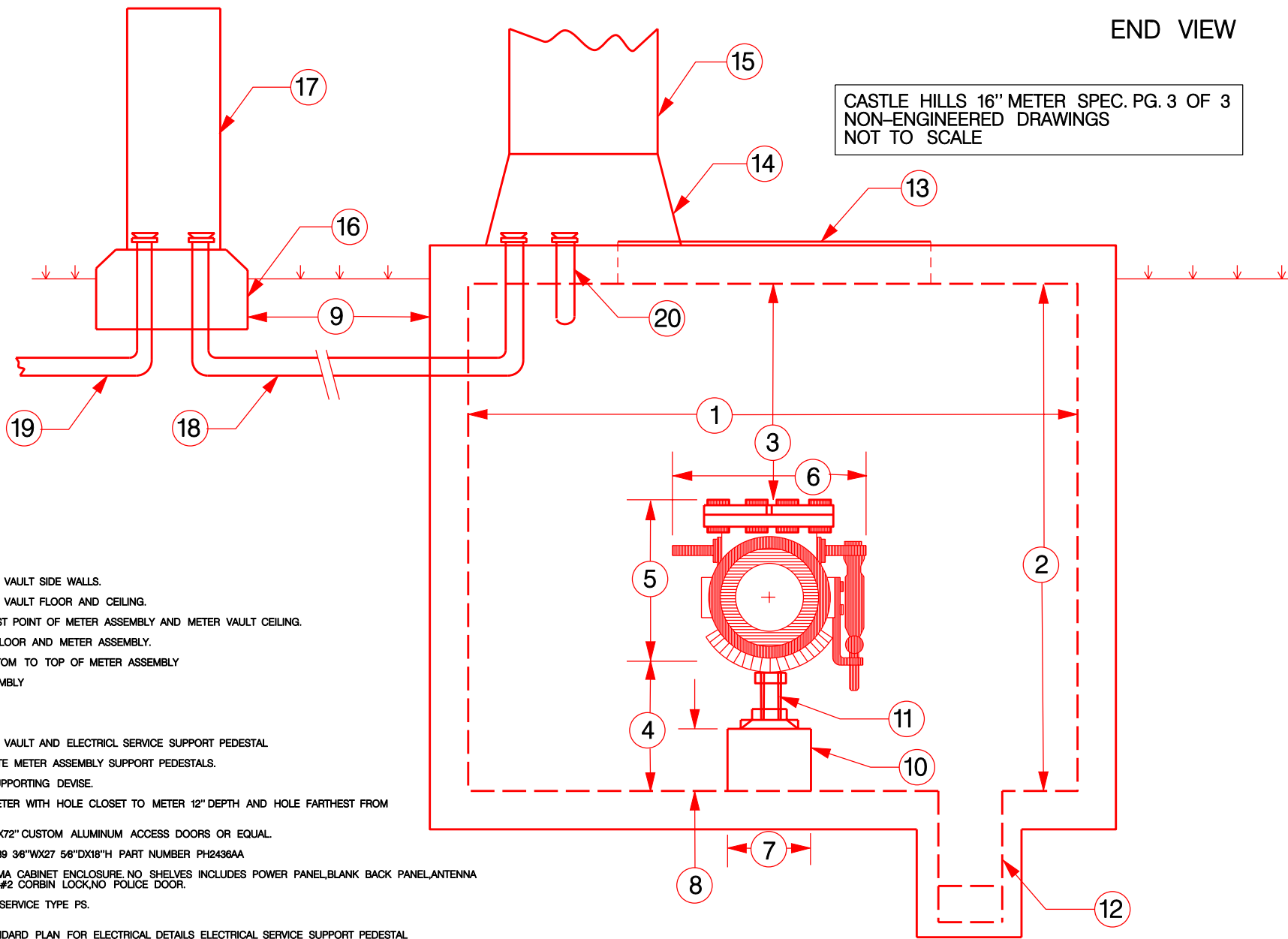


CASTLE HILLS 16" METER SPEC. PG. 3 OF 3  
NON-ENGINEERED DRAWINGS  
NOT TO SCALE



1. 9' MINIMUM CLEARANCE BETWEEN METER VAULT SIDE WALLS.
2. 9' MINIMUM CLEARANCE BETWEEN METER VAULT FLOOR AND CEILING.
3. 3' MINIMUM CLEARANCE BETWEEN HIGHEST POINT OF METER ASSEMBLY AND METER VAULT CEILING.
4. 24" CLEARANCE BETWEEN METER VAULT FLOOR AND METER ASSEMBLY.
5. 32.5" APPROXIMATE DISTANCE FROM BOTTOM TO TOP OF METER ASSEMBLY
6. 36" APPROXIMATE WIDTH OF METER ASSEMBLY
7. 16"W SUPPORT PEDESTAL
8. 12"H SUPPORT PEDESTAL
9. 5' MINIMUM CLEARANCE BETWEEN METER VAULT AND ELECTRICAL SERVICE SUPPORT PEDESTAL
10. (3) 16"WX12"HX12"D REINFORCED CONCRETE METER ASSEMBLY SUPPORT PEDESTALS.
11. SCREW JACK OR OTHER ADJUSTABLE SUPPORTING DEVICE.
12. FRONT AND REAR SUMP HOLES. 12" DIAMETER WITH HOLE CLOSEST TO METER 12" DEPTH AND HOLE FARTHEST FROM METER 24" DEPTH.
13. USF FABRICATION INC, THD MINIMUM 60"WX72" CUSTOM ALUMINUM ACCESS DOORS OR EQUAL.
14. QUAZITE TRAFFIC SIGNAL CABINET BASE 39 3/8"WX27 5/8"DX18"H PART NUMBER PH2436AA
15. NAZTEC, INC NEMA M30 BASE MOUNT NEMA CABINET ENCLOSURE, NO SHELVES INCLUDES POWER PANEL, BLANK BACK PANEL, ANTENNA MOUNTING HARDWARE, FANLIGHT PANEL-#2 CORBIN LOCK, NO POLICE DOOR.
16. ELECTRICAL SERVICE SUPPORT PEDESTAL SERVICE TYPE PS.
17. TESCO SERVICE PEDESTAL MODEL 26-00  
FOR ITEMS 5 & 6, USE TxDOT STANDARD PLAN FOR ELECTRICAL DETAILS ELECTRICAL SERVICE SUPPORT PEDESTAL SERVICE TYPE PS ED (9)-03
18. CONDUIT FOR ELECTRICAL SERVICE LOAD.
19. CONDUIT FOR ELECTRICAL SERVICE LINE
20. CONDUIT FOR POWER AND COMMUNICATIONS TO VAULT.

NOTE:  
DETAIL SUBJECT TO CHANGE PER DIRECTION  
OF CITY OF LEWISVILLE ENGINEERING DIVISION



Standard Details  
Castle Hills 16" Meter  
Vault Assembly

Revisions:		
No.	Description	Date

Department of  
Community  
Development  
Office No. 972-219-3490  
Fax No. 972-219-3487  
www.cityoflewisville.com

Dated: 9-15-08  
Sheet:  
10.2c