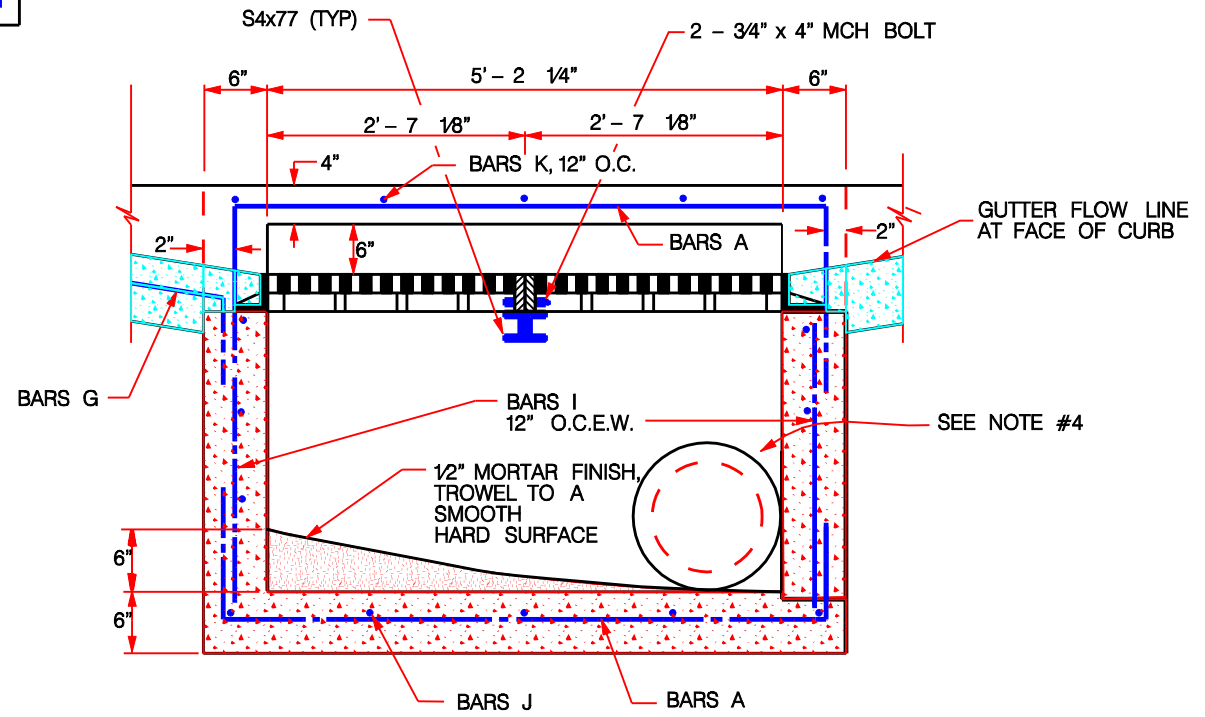


PLAN VIEW

REFERENCE THE BAR SCHEDULE ON SHEET 10.11



SECTION A-A

NOTES:

1. COMBINATION INLETS TO BE USED IN ALL ALLEYS WHERE INLETS ARE REQUIRED.
2. ALL LAPS AND EXTENSIONS OF REINFORCING BARS SHALL BE 24" UNLESS NOTED OTHERWISE.
3. TACK WELD GRATES IN PLACE.
4. PIPE MAY BE PLACED IN ANY APPROVED WALL BUT SHALL NOT ENTER ANY CORNER, OR AT PILASTER.
5. SEE COMBINATION INLET - ALLEY PAVING BLOCKOUT DETAIL ON SHEET 10.15 FOR CONSTRUCTION.

NOTE:
DETAIL SUBJECT TO CHANGE PER DIRECTION OF CITY OF LEWISVILLE ENGINEERING DIVISION.



Standard Details

Combination Inlet
Two Grate

Revisions:

No.	Description	Date

Department of
Community
Development

Office No. 972-219-3490
Fax No. 972-219-3487
www.cityoflewisville.com

Dated: 8-13-07

Sheet:
9.8