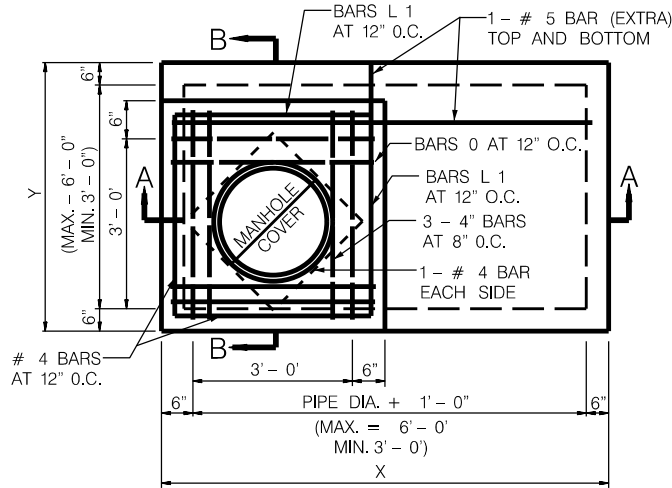
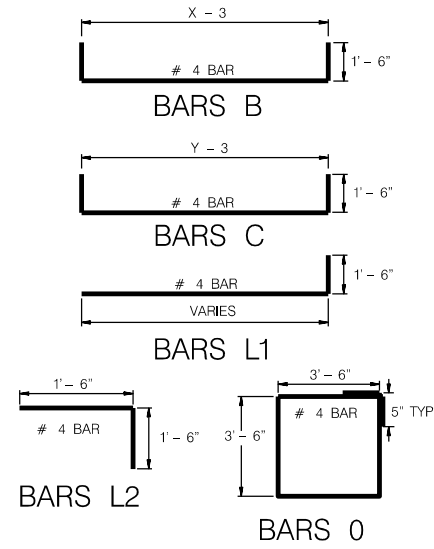


**GENERAL NOTES:**

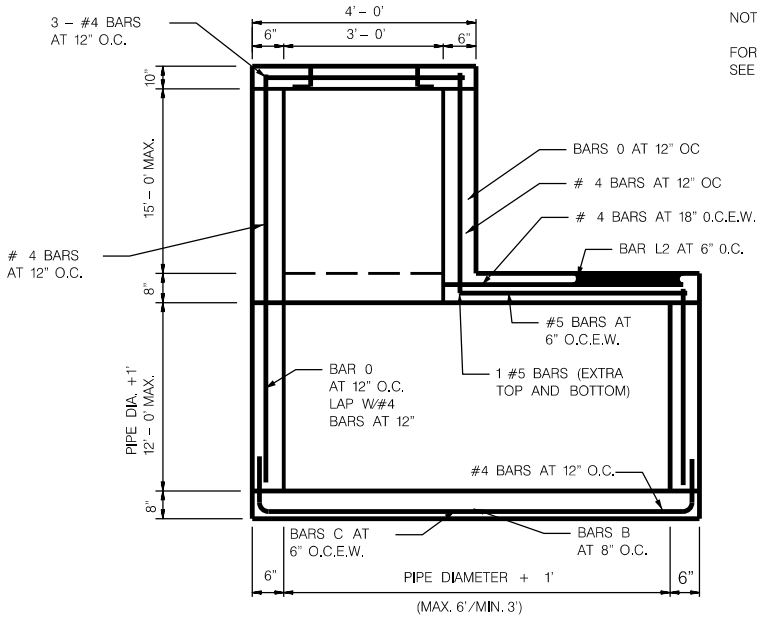
- EXPOSED EDGES SHALL BE CHAMFERED 3/4" (INCH).
- AN ALTERNATE DESIGN DRAWING BEARING THE SEAL OF A REGISTERED PROFESSIONAL ENGINEER WILL BE ACCEPTABLE FOR PRECAST CONSTRUCTION OF MANHOLES.
- THE CONTRACTOR MAY WITH THE APPROVAL OF THE CITY ENGINEER FURNISH MANHOLES OF EQUIVALENT STRUCTURAL DESIGN.
- IN AREAS OF CONFLICT BETWEEN REINFORCING STEEL, BLOCKOUTS, PIPES, ANCHORS, BOLTS OR OTHER REINFORCING STEEL, THE REINFORCEMENT SHALL BE BENT OR ADJUSTED TO CLEAR AS DIRECTED BY THE DESIGN ENGINEER.
- CONNECTING PIPES SHOULD ENTER WITHIN 10 DEGREES OF NORMAL TO THE INLET WALL. IF NECESSARY, PIPE ELBOW OR CURVED APPROACH ALIGNMENT SHOULD BE USED TO STAY WITHIN THIS LIMIT. PIPES MAY ENTER ANY OR ALL WALLS. THE MAXIMUM SIZE OF PIPE THAT CAN BE ACCOMMODATED IS 60" MORE THAN ONE PIPE MAY ENTER A SIDE, SUBJECT TO THE MAXIMUM BOX DIMENSIONS SHOWN. THE CLEAR DISTANCE BETWEEN ADJACENT PIPES SHOULD BE A MINIMUM OF 9" (INCHES).



**PLAN VIEW**

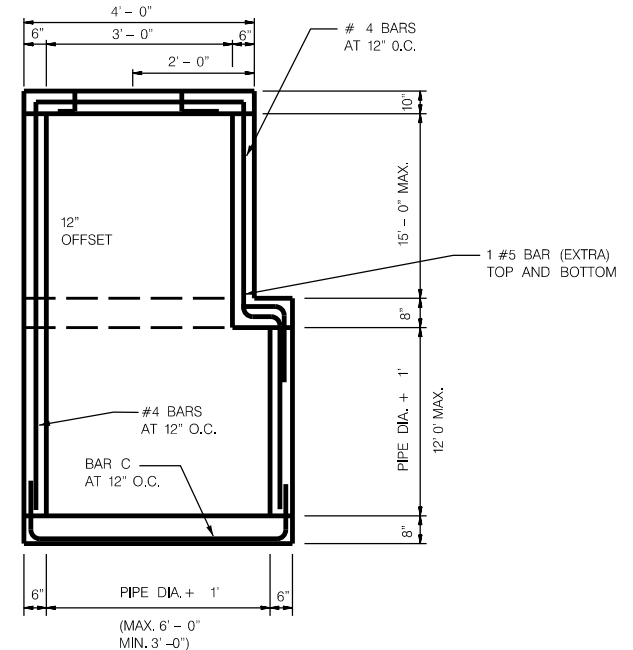


**BAR DIAGRAMS**



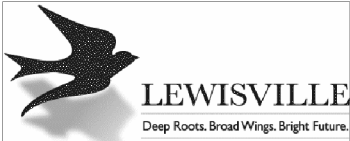
**SECTION 'A - A'**

NOTE:  
FOR MANHOLE FRAME AND COVER  
SEE SHEET 10.3



**SECTION 'B - B'**

NOTE:  
DETAIL SUBJECT TO CHANGE PER DIRECTION  
OF CITY OF LEWISVILLE ENGINEERING DIVISION.



**Standard Details**  
**Storm Drain Manhole Detail**  
**(Manhole With Cast-in-Place Riser)**

Revisions:		
No.	Description	Date

<b>Engineering Department</b>	Dated: 4-27-10
	Dated: 10-24-19
Office No. 972-219-3490	Sheet: 9.14
www.cityoflewisville.com	