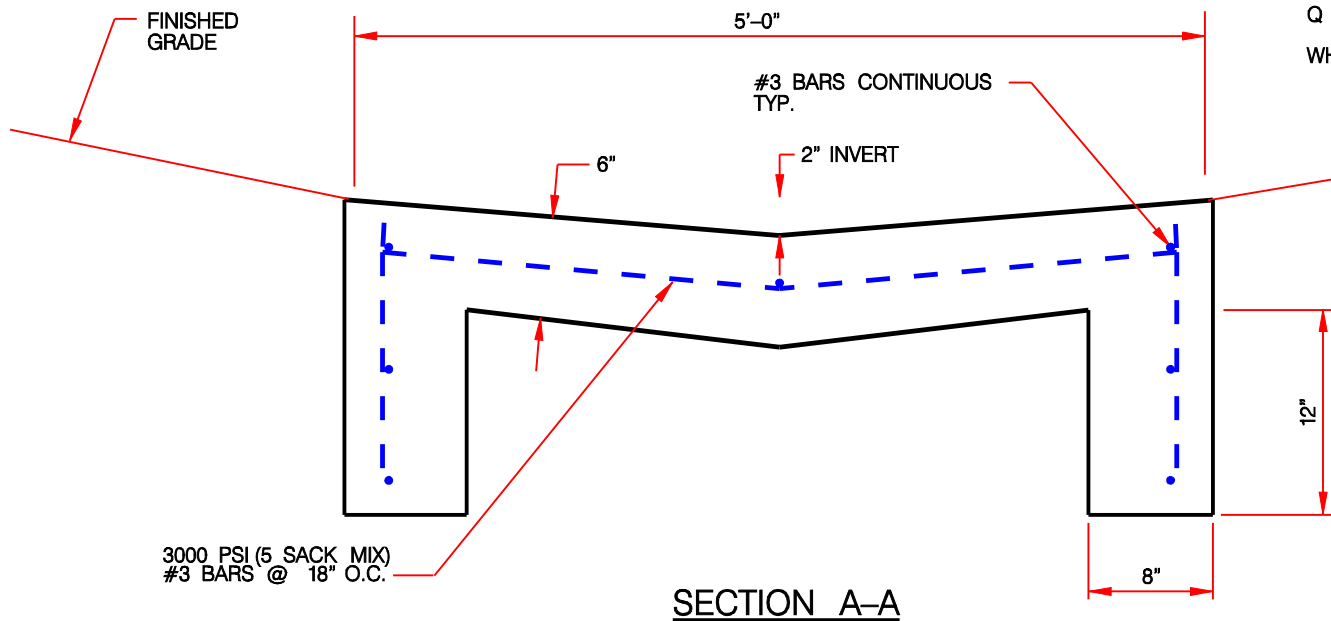


NOTE:
1. SPACING OF EXPANSION
NOT TO EXCEED 20'



FLUME CAPACITY - USE MANNING'S EQUATION

$$Q = \frac{1.486}{n} A R^{2/3} S^{1/2}$$

WHERE n = ROUGHNESS COEFFICIENT (0.013 FOR CONCRETE)
A = CROSS SECTIONAL AREA OF FLOW
R = HYDRAULIC RADIUS
S = SLOPE OF WATER SURFACE (0.0085 MINIMUM)

NOTE:
DETAIL SUBJECT TO CHANGE PER DIRECTION
OF CITY OF LEWISVILLE ENGINEERING DIVISION.

Revisions:

No.	Description	Date