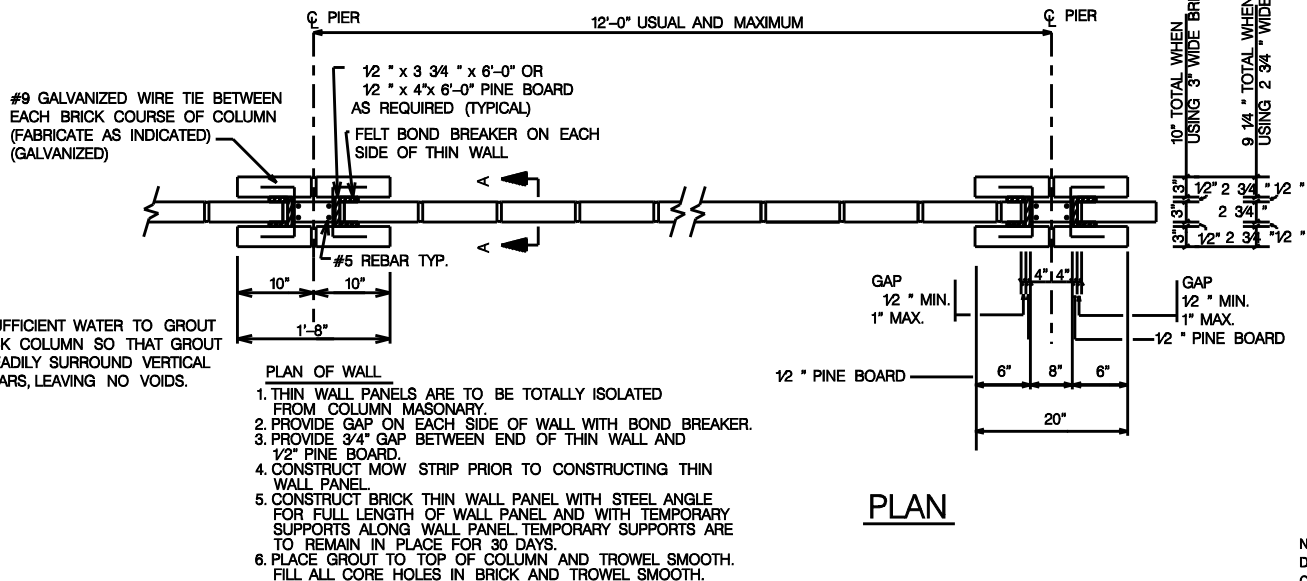
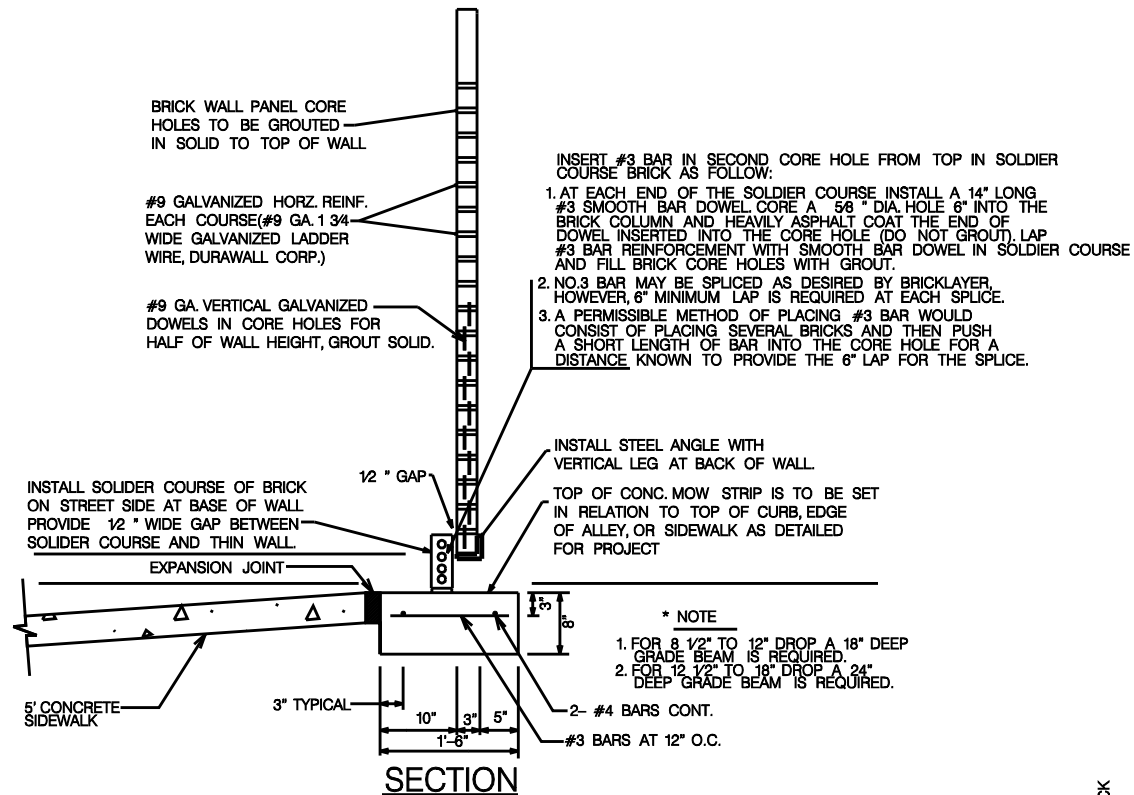


ELEVATION

NOTE:  
DETAIL SUBJECT TO CHANGE PER DIRECTION OF CITY OF LEWISVILLE ENGINEERING DIVISION.

Revisions:

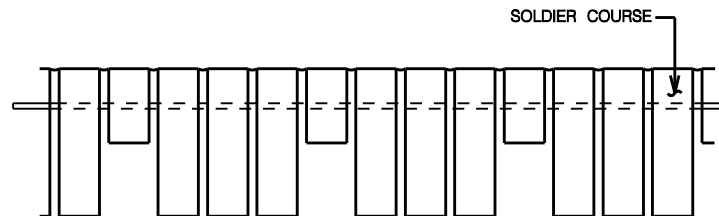
No.	Description	Date



NOTE:  
DETAIL SUBJECT TO CHANGE PER DIRECTION OF CITY OF LEWISVILLE ENGINEERING DIVISION.

Revisions:

No.	Description	Date



CROSS DRAINAGE

INSTALL A 14" LONG #3 SMOOTH BAR DOWEL CORE A 5/8" DIA. HOLE 6" INTO THE BRICK COLUMN AND A HEAVILY ASPHALT COAT THE END OF DOWEL INSERTED INTO THE CORE HOLE (DO NOT GROUT). LAP #3 BAR REINFORCEMENT WITH SMOOTH BAR DOWEL IN SOLDIER COURSE AND FILL BRICK CORE HOLES WITH GROUT

NOTE:  
THIS DESIGN REQUIRES SPECIAL APPROVAL FROM  
THE CITY OF LEWISVILLE ENGINEERING DIVISION.

NOTE:  
DETAIL SUBJECT TO CHANGE PER DIRECTION  
OF CITY OF LEWISVILLE ENGINEERING DIVISION.



Standard Details  
Standard Thin Wall  
Screening Wall

Revisions:

No.	Description	Date

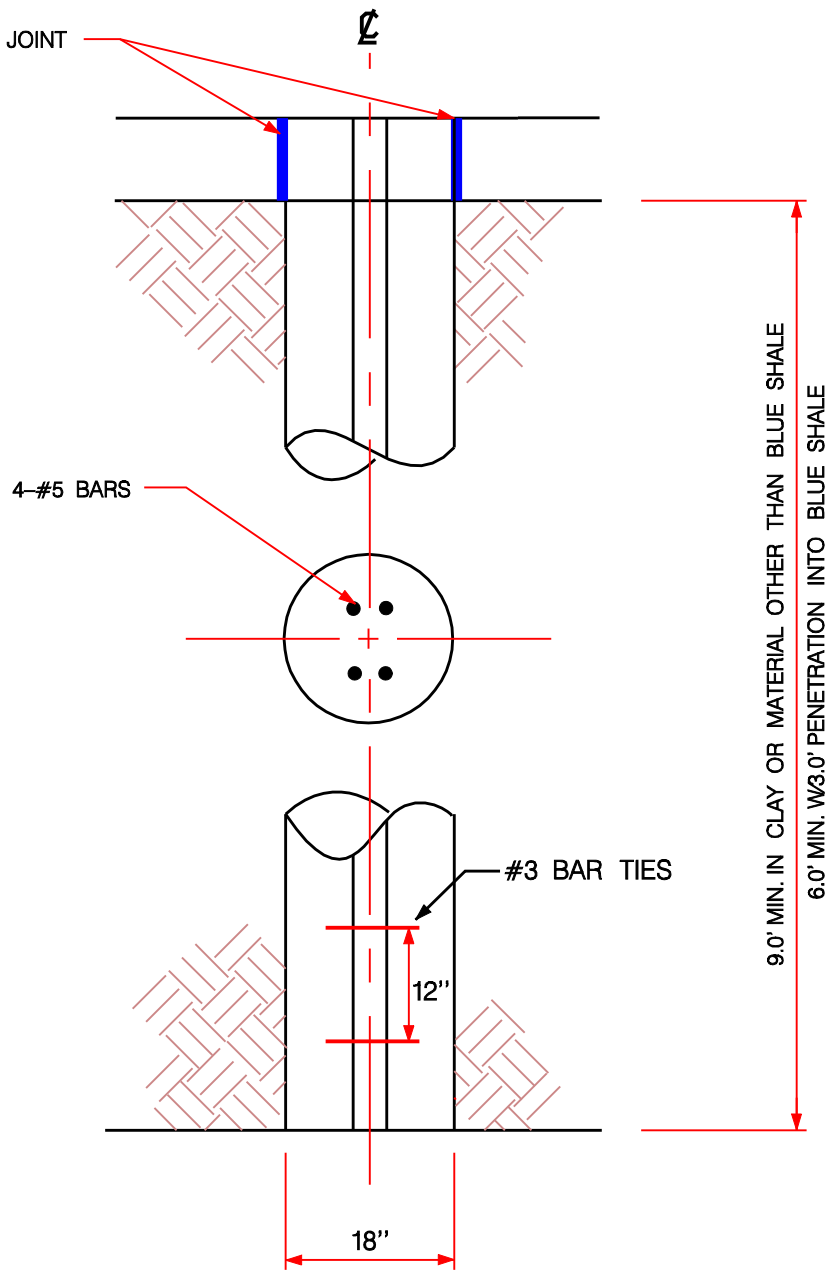
Department of  
Community  
Development

Office No. 972-219-3460  
Fax No. 972-219-3487  
www.cityoflewisville.com

Dated: 8-13-07

Sheet:  
6.2

EXPANSION JOINT



SCREENING WALLS WITH A GAP UNDERNEATH THE WALL SHALL REQUIRE A 3x3 GALVANIZED BRACKET (1/4" THICK) TO SUPPORT THE WALL AT THE BOTTOM. A SOLDIER COURSE WILL BE REQUIRED ALONG THE THOROUGHFARE SIDE TO CLOSE THE GAP.

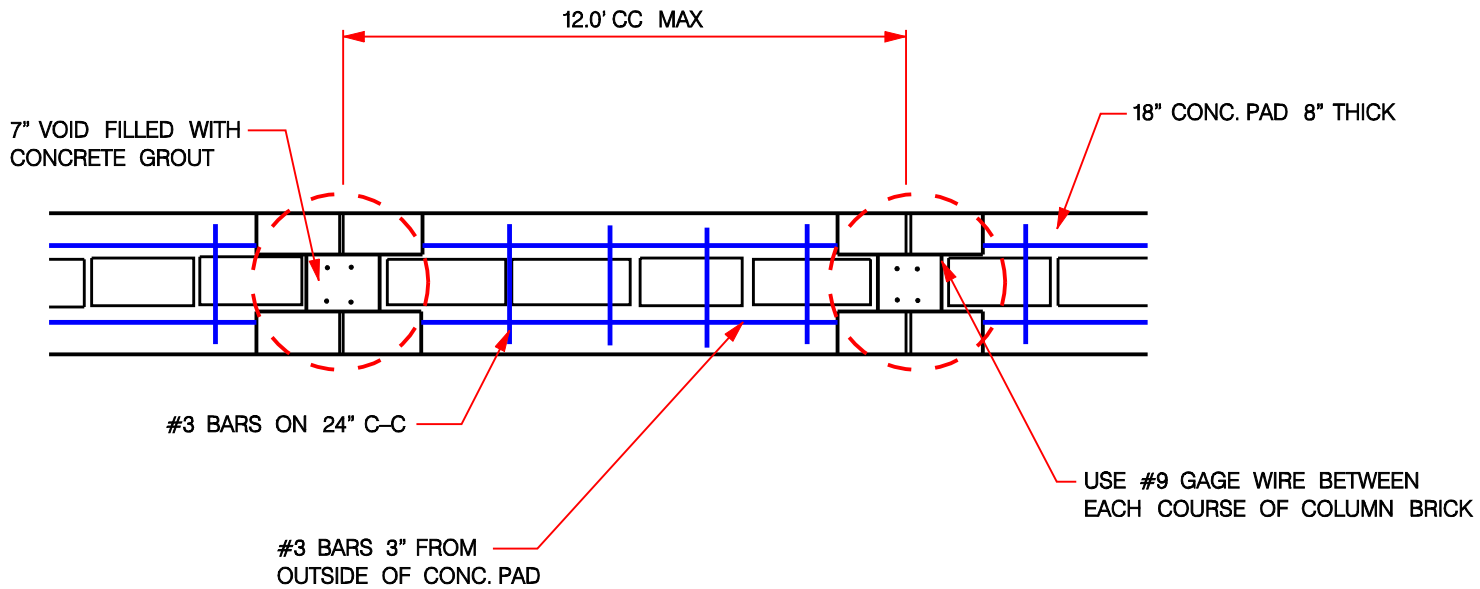
NOTES:

1. CONCRETE COMP STRENGTH - 4000 P.S.I.
2. REINFORCEMENT STEEL - ASTM A615-GR 60
3. CLEAN BOTTOM OF HOLE PRIOR TO PLACEMENT OF CONCRETE
4. CONCRETE SHALL BE PLACED WITHIN 8 HRS OF DRILLING
5. DESIGN WIND PRESSURE 20 PSF
6. MAX. PLASTER SPACING - 12.0'
7. MAX. HEIGHT OF WALL - 6.0'
8. EXTEND REBAR 4.0' INTO PLASTER AND COLUMN

NOTE:  
DETAIL SUBJECT TO CHANGE PER DIRECTION  
OF CITY OF LEWISVILLE ENGINEERING DIVISION.

Revisions:

No.	Description	Date



PLAN VIEW

NOTES:

1. CONCRETE - MINIMUM COMPRESSIVE STRENGTH, 4000 PSI @ 28 DAYS
2. REINFORCING STEEL SHALL BE NEW BILLET STEEL CONFORMING TO THE REQUIREMENTS OF ASTM A-615-GR.60.
3. MORTAR SHALL BE TYPE "S"
4. CONSTRUCTION SHALL BE IN ACCORDANCE WITH THE REQUIRMENTS OF THE "RECOMMENDED PRACTICE FOR ENGINEERED BRICK MASONRY" BRICK OF AMERICA

NOTE:  
DETAIL SUBJECT TO CHANGE PER DIRECTION  
OF CITY OF LEWISVILLE ENGINEERING DIVISION.



Standard Details  
Thin Wall Mow Strip Detail

Revisions:

No.	Description	Date

Department of  
Community  
Development

Office No. 972-219-3490  
Fax No. 972-219-3487  
www.cityoflewisville.com

Date: 8-13-07

Sheet: 6.4